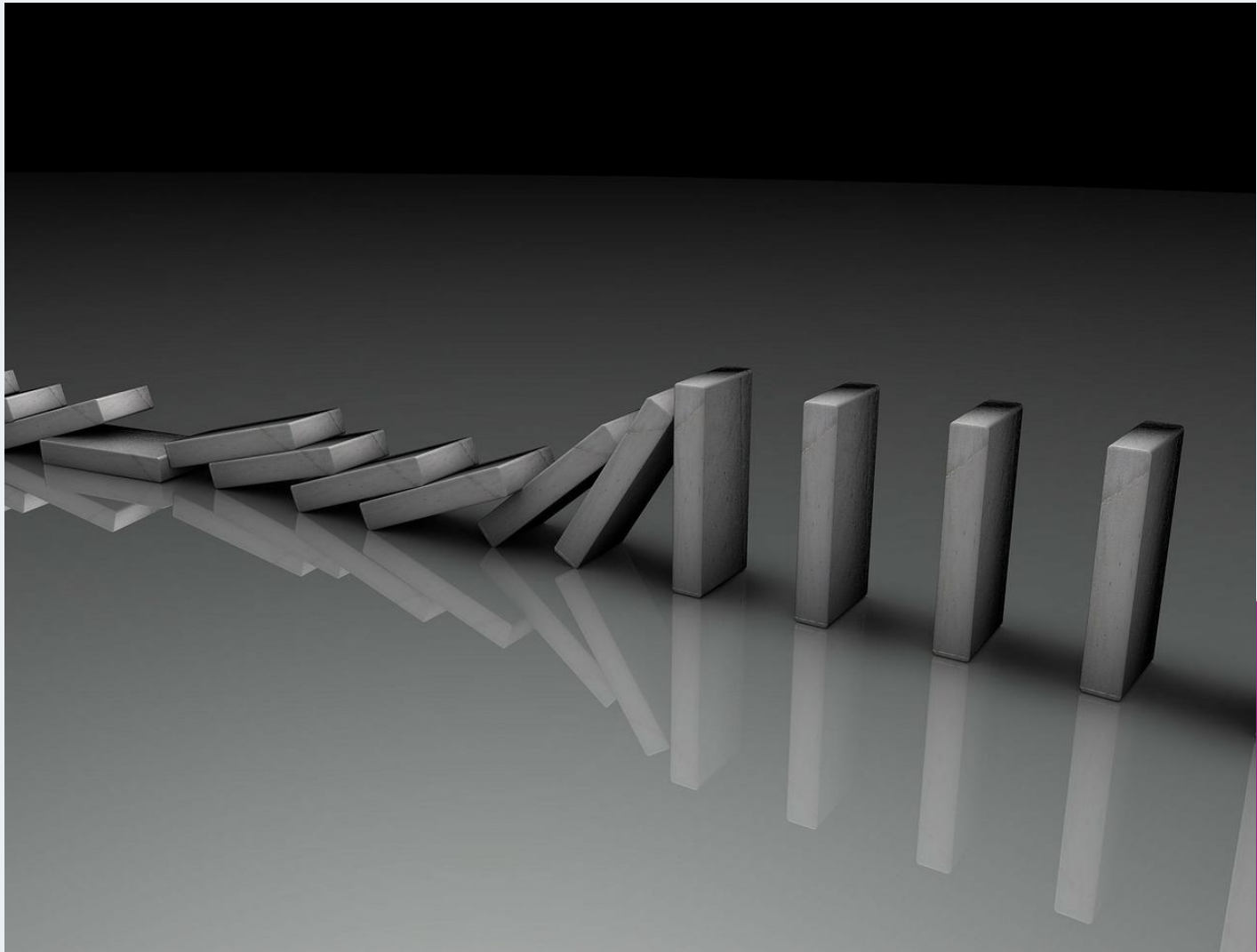




Tax Policy: A Practical Perspective

Presented by Ceri Stoner

Tax Policy: The Domino Effect



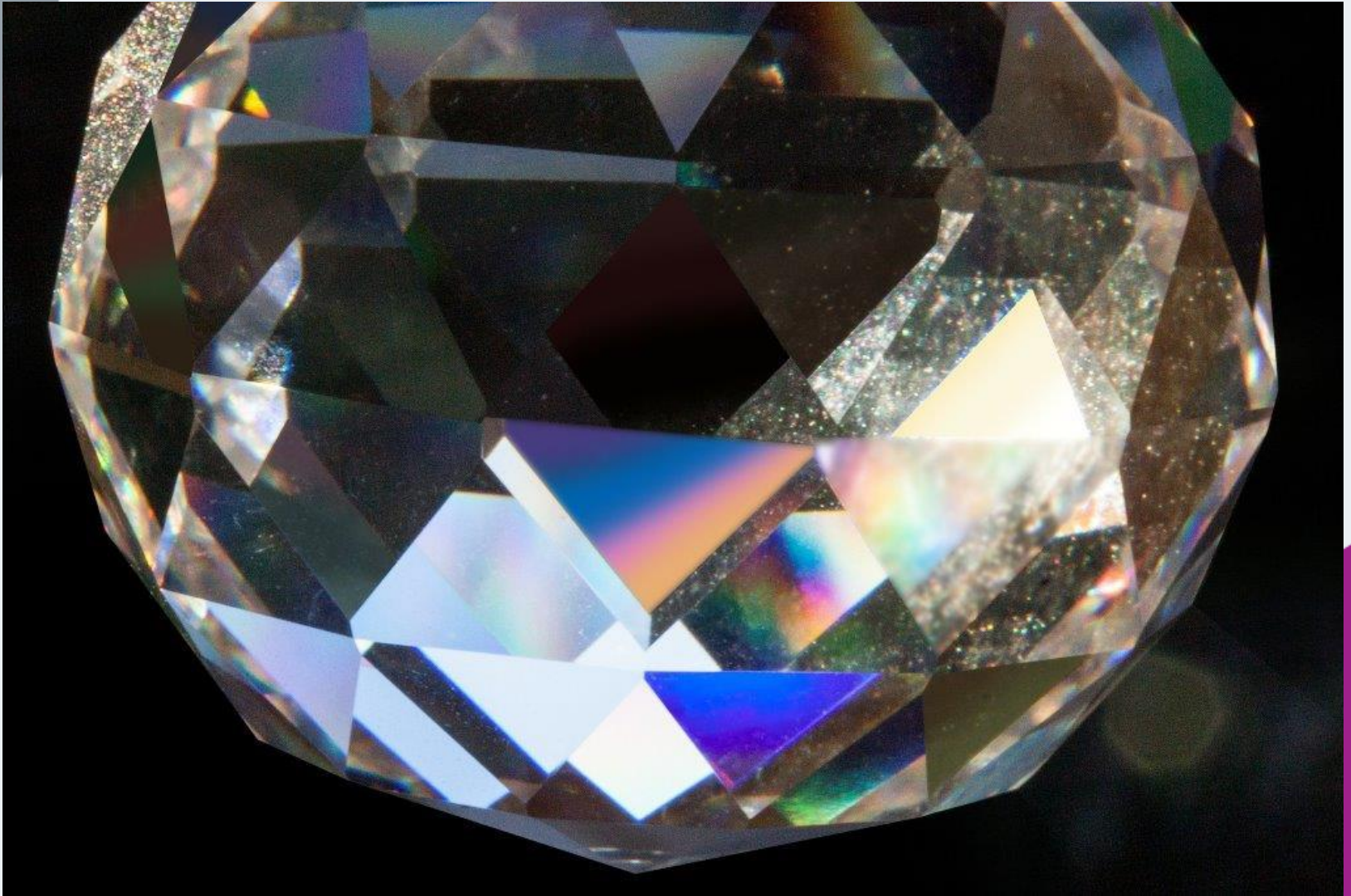
Keeping up with Digitalisation



The Impact of Digitalisation



How Digital Impacts Business



Digital Business Models & Limitations



Tax Policy in Practice



Tax Collection in Practice



Offshore IP Receipts in Practice



Withholding Tax in Practice



Transfer Pricing in Practice



Transfer Pricing!



www.shutterstock.com • 563832760

Digital Tax and Digital Permanent Establishment

**United
Kingdom**



OECD

WIGGIN

The Future of Tax Policy



All images in this presentation are sourced from <https://www.pexels.com/royalty-free-images/> or <https://pixabay.com/>

THANK YOU



WIGGIN